

# PODTBURG METROPOLITAN DISTRICT NO. 1

2619 Canton Court, Suite A  
Fort Collins, CO 80525

December 21, 2022

Division of Local Government  
1313 Sherman Street, Room 521  
Denver, CO 80203

Weld County Assessor  
1400 N. 17<sup>th</sup> Avenue  
Greeley, CO 80631

Weld County Clerk & Recorder  
1402 N. 17<sup>th</sup> Avenue  
Greeley, CO 80631

RE: Podtburg Metropolitan District No. 1 (LGID 67550), Current Boundary Map

Dear Sir or Madam:

In accordance with Section 32-1-306, C.R.S., this letter is to advise you on the boundaries of the above-referenced District through the filing of the District's boundary map.

Please contact me if you have any questions.

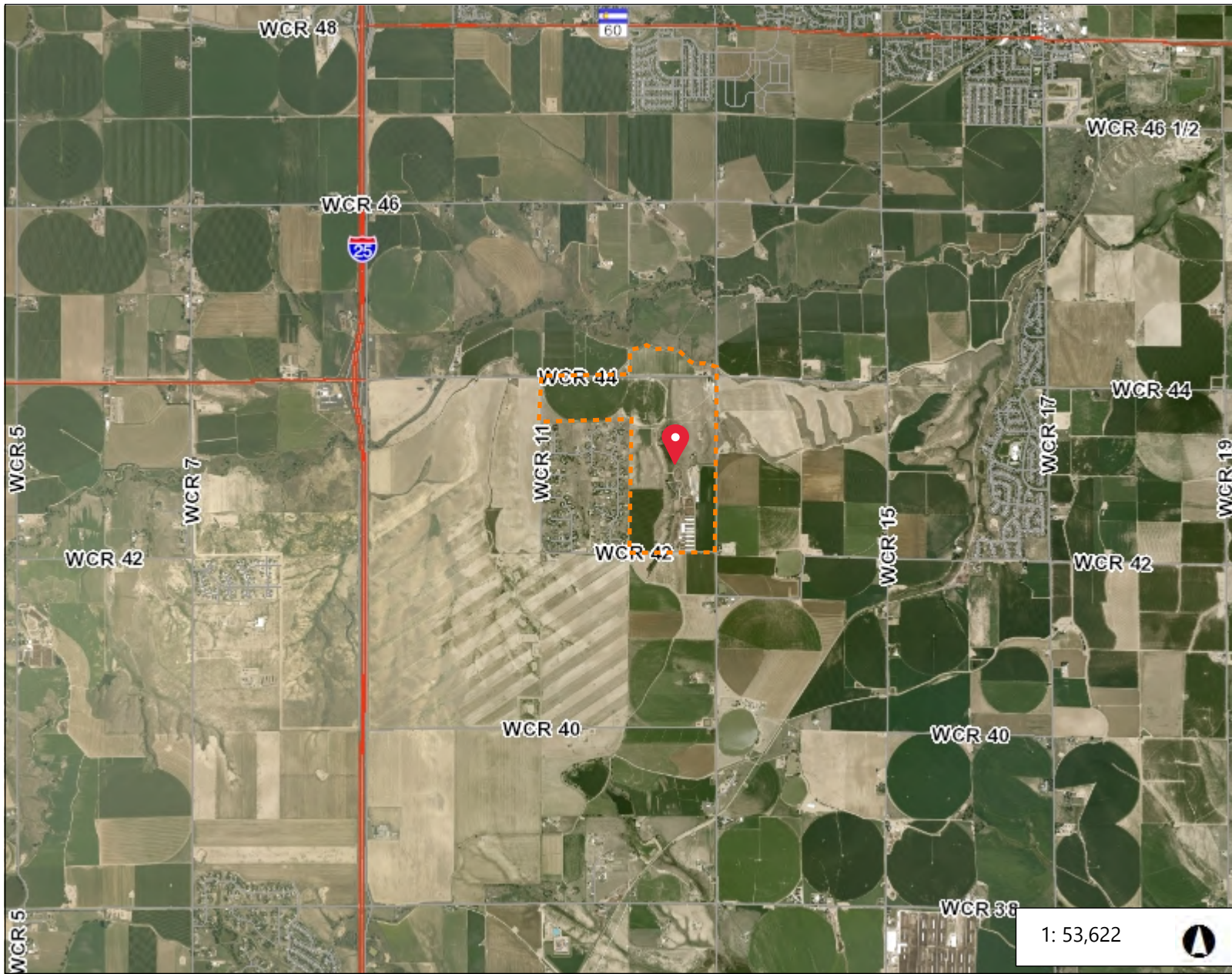
Sincerely,

/s/ Alex Carlson  
Manager





Via e-mail: Weld County Assessor, Brenda Dones, [assessor@weldgov.com](mailto:assessor@weldgov.com)

Weld County Clerk & Recorder, Carly Koppes, [weld-districts@weldgov.com](mailto:weld-districts@weldgov.com)

Via e-filing portal: Division of Local Government



### Legend

-  Highway
-  Road
-  Road
-  Highway

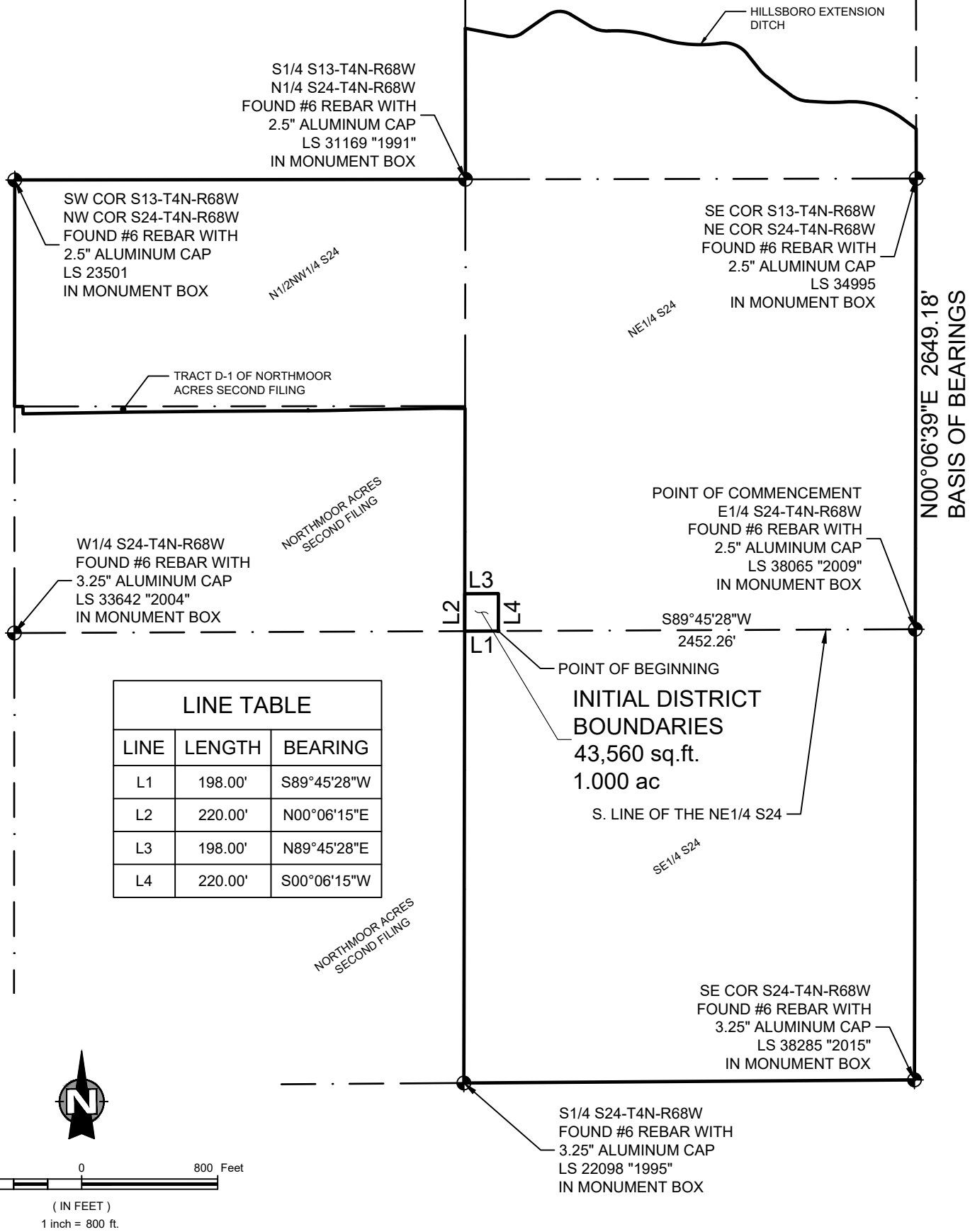
1: 53,622



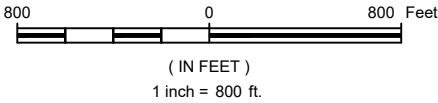
8,936.9      0      4,468.46      8,936.9      Feet

### Notes

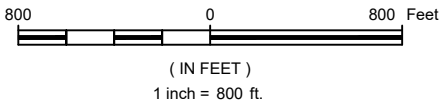
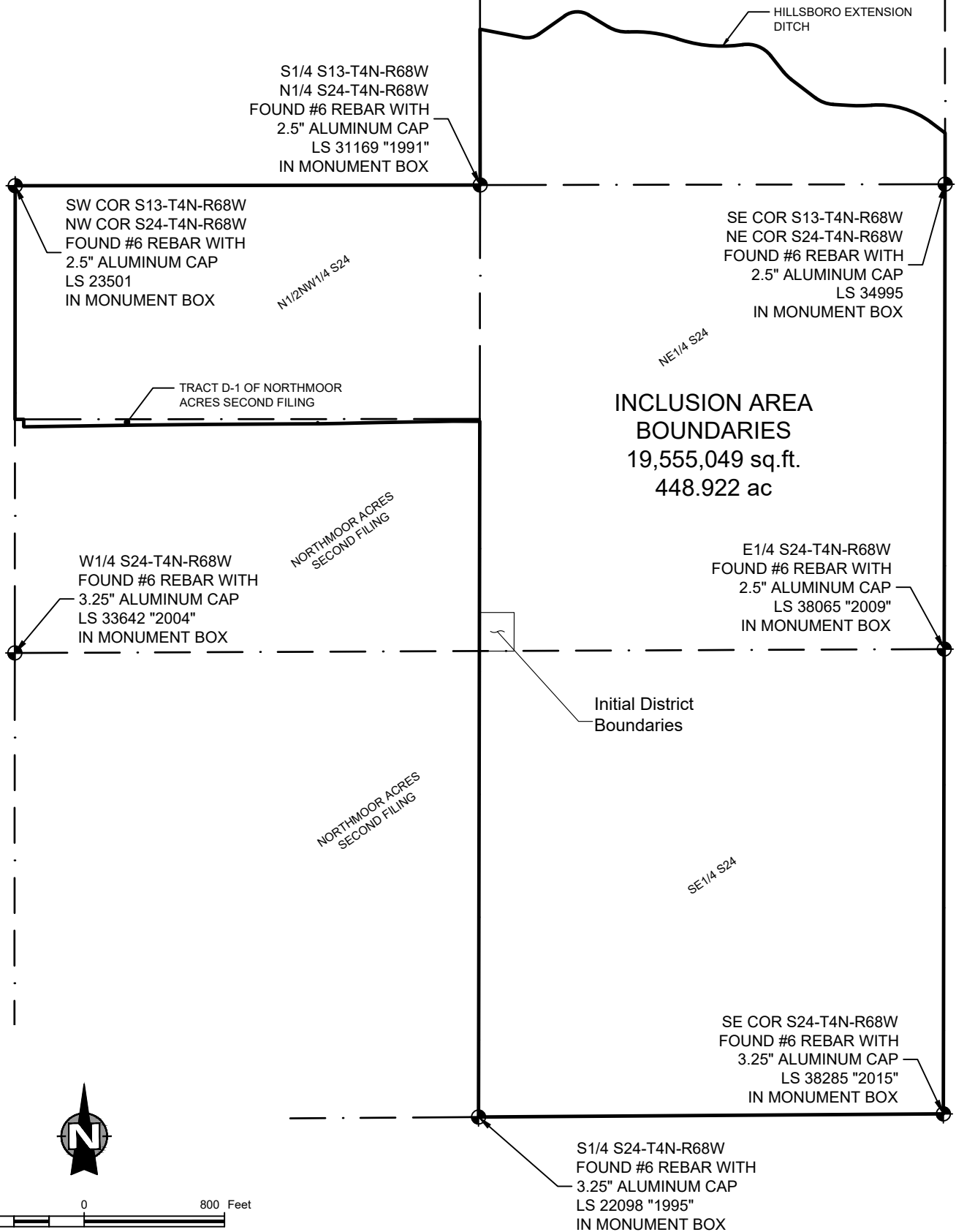
S:\Survey\_Jobs\1659-001\Drawg\Metro District\1659-001 Initial District Boundaries.dwg, 6/21/2021 12:59:01 PM, 1:1



LINE TABLE		
LINE	LENGTH	BEARING
L1	198.00'	S89°45'28"W
L2	220.00'	N00°06'15"E
L3	198.00'	N89°45'28"E
L4	220.00'	S00°06'15"W



<p><b>NORTHERN ENGINEERING</b></p> <p style="font-size: small;">FORT COLLINS: 301 North Howes Street, Suite 100, 80521 GREELEY: 820 8th Street, 80631</p>	<p><b>PODTBURG METROPOLITAN DISTRICT</b></p> <p>JOHNSTOWN COLORADO</p>	<p>DESCRIPTION</p> <p><b>INITIAL DISTRICT BOUNDARIES</b></p>	
		<p>DRAWN BY</p> <p>L. Smith</p>	<p>SCALE</p> <p>1" = 800'</p>
<p>DATE</p> <p>June, 2021</p>		<p>PROJECT</p> <p>1659-001</p>	



**INCLUSION AREA  
BOUNDARIES**  
19,555,049 sq.ft.  
448.922 ac

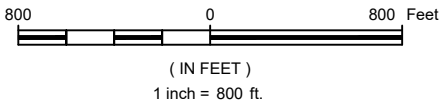
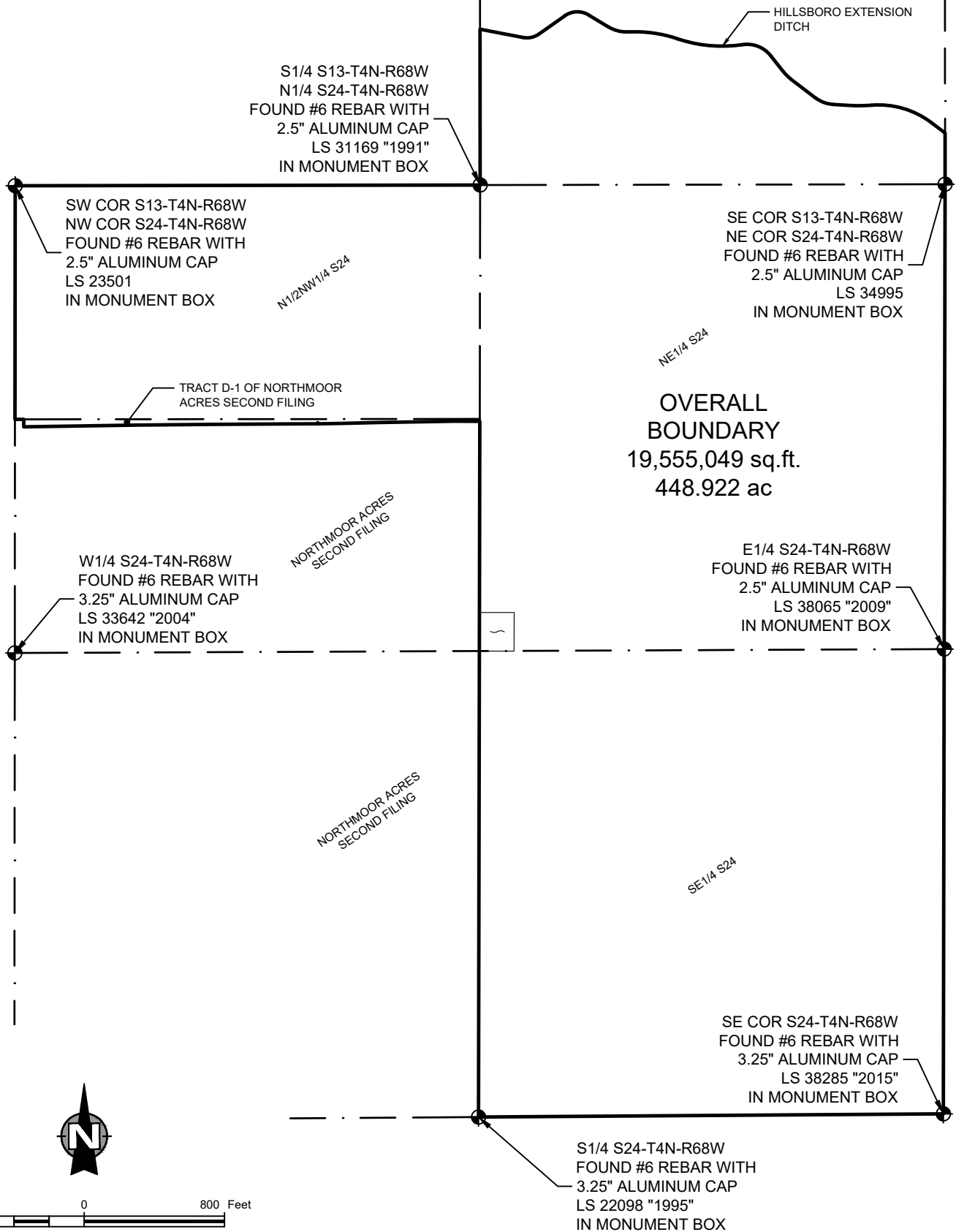
**NE** | **NORTHERN  
ENGINEERING**

**PODTBURG  
METROPOLITAN DISTRICT**  
JOHNSTOWN  
COLORADO

DESCRIPTION  
**INCLUSION AREA  
BOUNDARY MAP**

DRAWN BY L. Smith	SCALE 1" = 800'
DATE May, 2021	PROJECT 1659-001

EXHIBIT  
**C-2**



**NORTHERN  
ENGINEERING**

FORT COLLINS: 301 North Howes Street, Suite 100, 80521  
GREELEY: 820 8th Street, 80631

970.221.4158  
northernengineering.com

**PODTBURG  
METROPOLITAN DISTRICT**  
JOHNSTOWN  
COLORADO

DESCRIPTION  
**OVERALL  
BOUNDARY MAP**

DRAWN BY L. Smith	SCALE 1" = 800'
DATE May, 2021	PROJECT 1659-001

EXHIBIT  
**C-3**