

PODTBURG METROPOLITAN DISTRICT NO. 2

2619 Canton Court, Suite A
Fort Collins, CO 80525

December 21, 2022

Division of Local Government
1313 Sherman Street, Room 521
Denver, CO 80203

Weld County Assessor
1400 N. 17th Avenue
Greeley, CO 80631

Weld County Clerk & Recorder
1402 N. 17th Avenue
Greeley, CO 80631

RE: Podtburg Metropolitan District No. 2 (LGID 67551), Current Boundary Map

Dear Sir or Madam:

In accordance with Section 32-1-306, C.R.S., this letter is to advise you on the boundaries of the above-referenced District through the filing of the District's boundary map.

Please contact me if you have any questions.

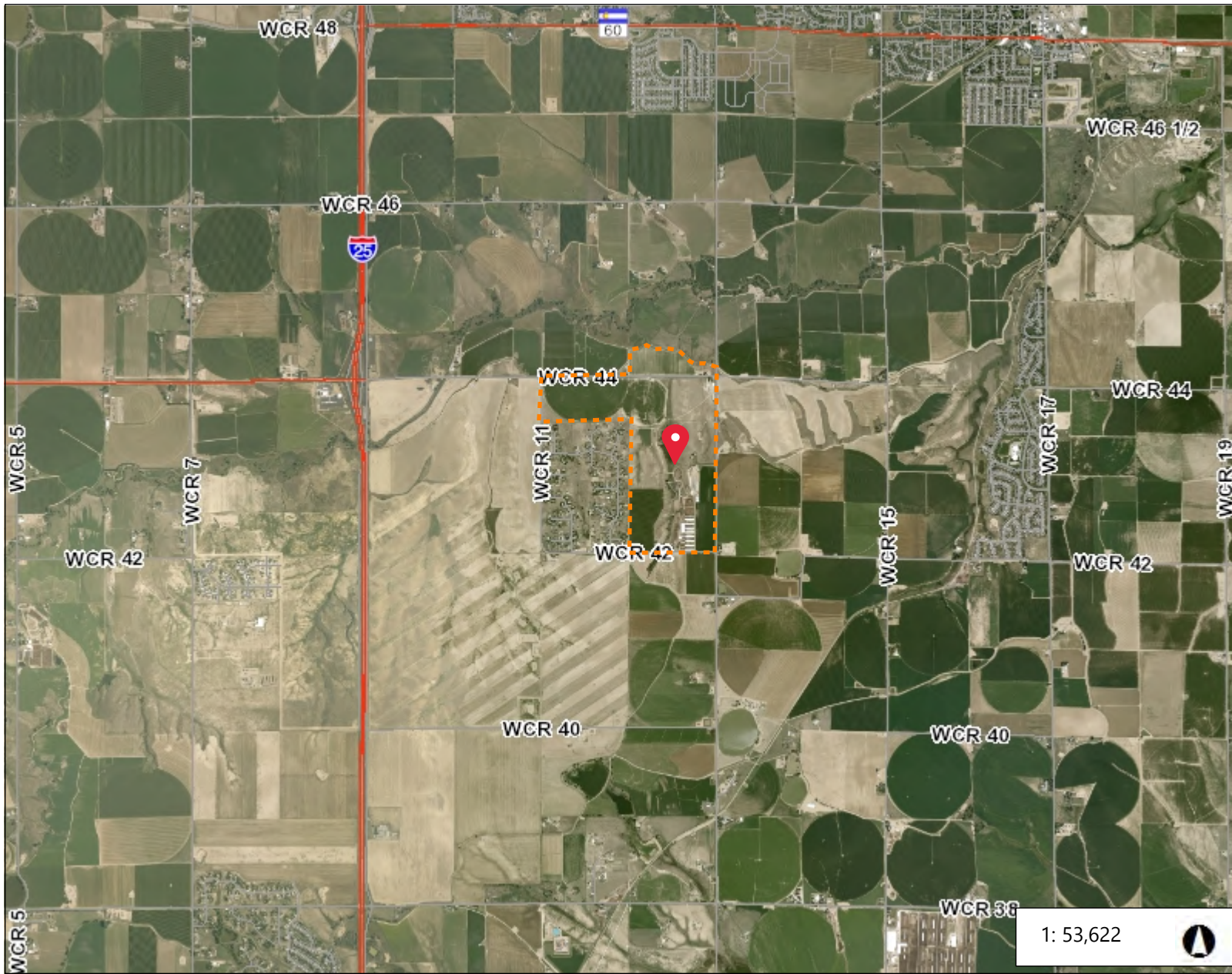
Sincerely,

/s/ Alex Carlson
Manager





Via e-mail: Weld County Assessor, Brenda Dones, assessor@weldgov.com

Weld County Clerk & Recorder, Carly Koppes, weld-districts@weldgov.com

Via e-filing portal: Division of Local Government



Legend

-  Highway
-  Road
-  Road
-  Highway

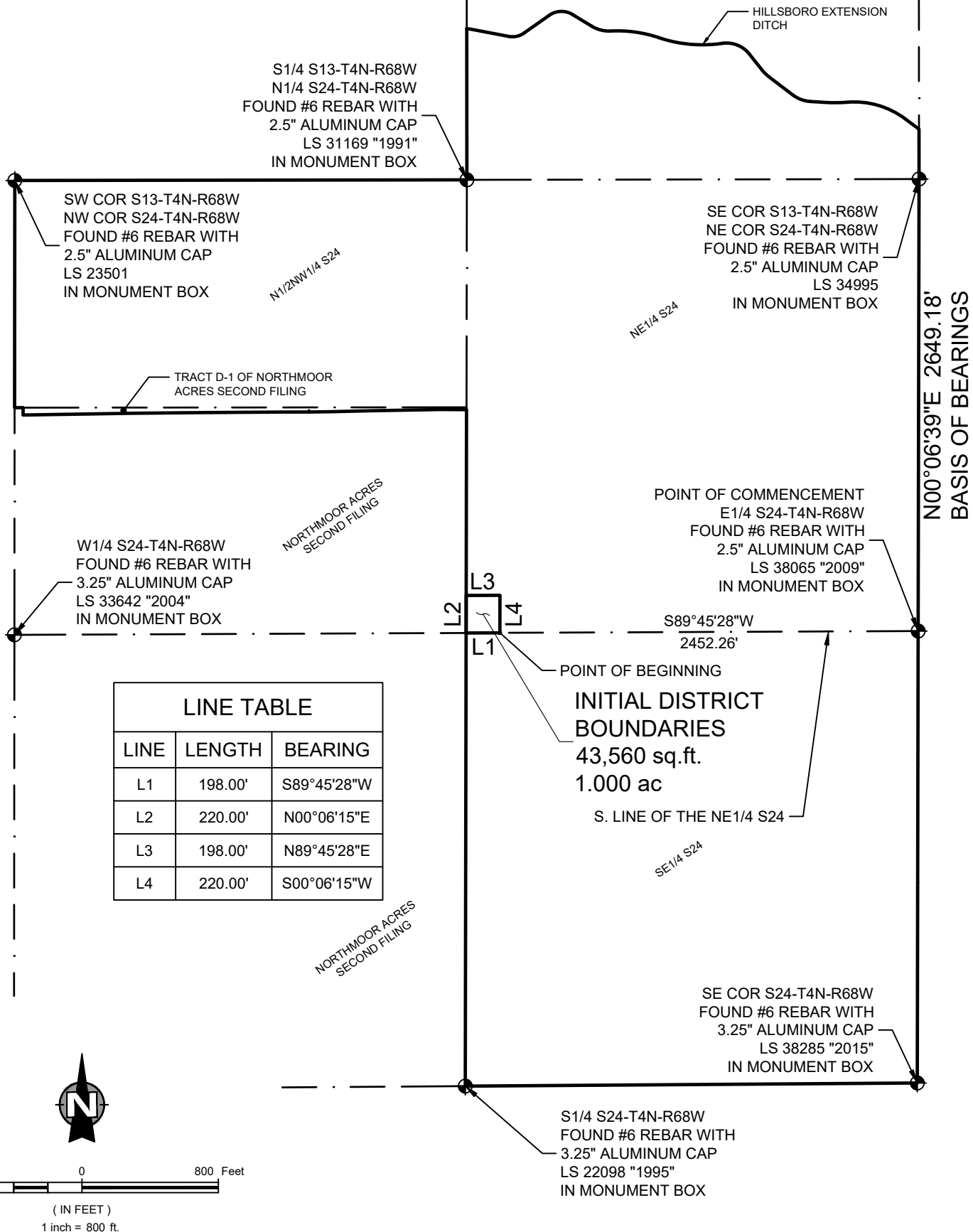
1: 53,622



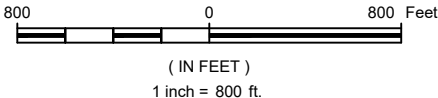
8,936.9 0 4,468.46 8,936.9 Feet

Notes

S:\Survey_Jobs\1659-001\Drawg\Metro District\1659-001 Initial District Boundaries.dwg, 6/21/2021 12:59:01 PM, 1:1



LINE TABLE		
LINE	LENGTH	BEARING
L1	198.00'	S89°45'28"W
L2	220.00'	N00°06'15"E
L3	198.00'	N89°45'28"E
L4	220.00'	S00°06'15"W



NE

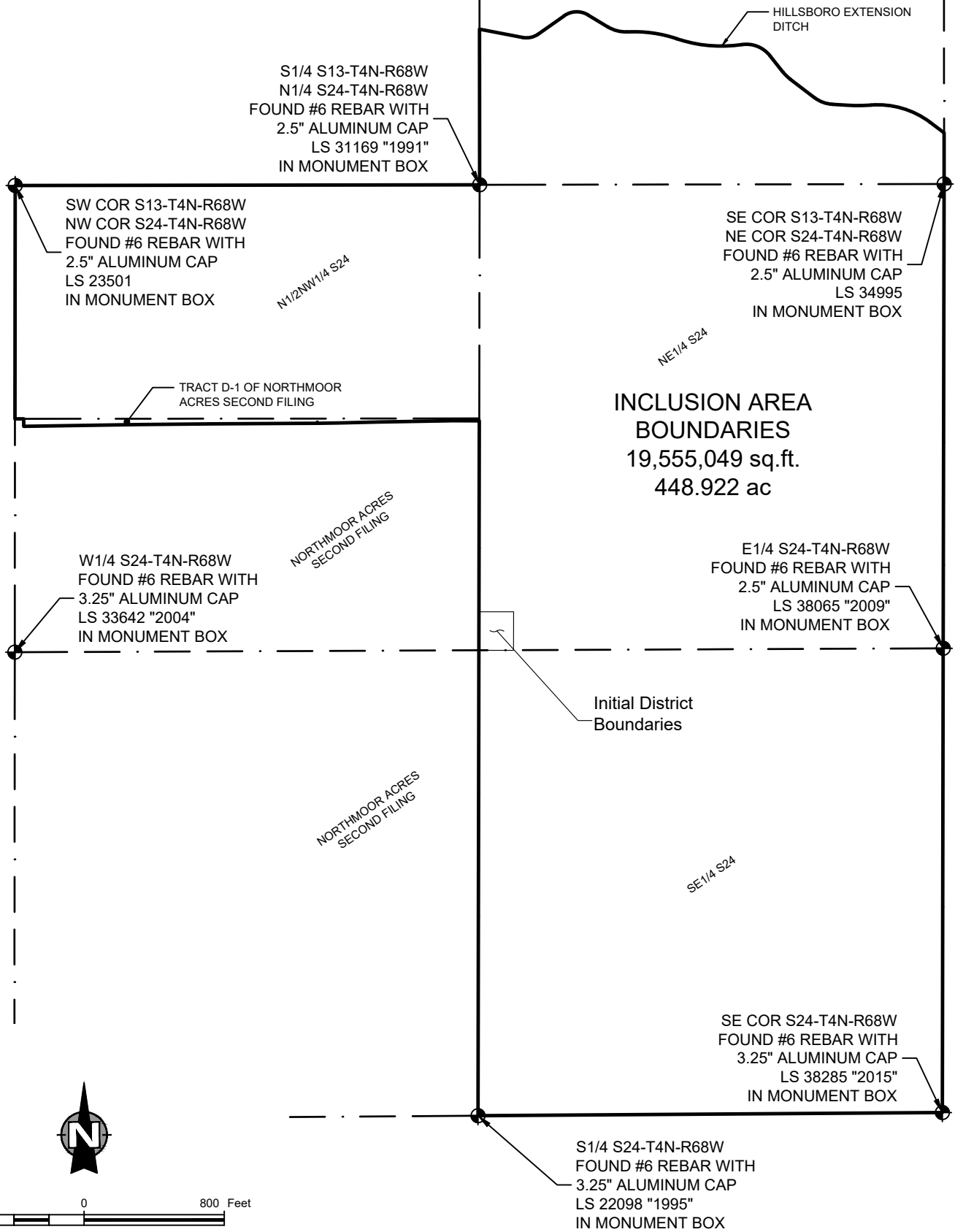
NORTHERN
ENGINEERING

**PODTBURG
METROPOLITAN DISTRICT**

JOHNSTOWN
COLORADO

FORT COLLINS: 301 North Howes Street, Suite 100, 80521 970.221.4158
 GREELEY: 820 8th Street, 80631 northernengineering.com

DESCRIPTION INITIAL DISTRICT BOUNDARIES		
DRAWN BY L. Smith	SCALE 1" = 800'	EXHIBIT C-1
DATE June, 2021	PROJECT 1659-001	



800 0 800 Feet

(IN FEET)
1 inch = 800 ft.



**NORTHERN
ENGINEERING**

FORT COLLINS: 301 North Howes Street, Suite 100, 80521
GREELEY: 820 8th Street, 80631

970.221.4158
northernengineering.com

**PODTBURG
METROPOLITAN DISTRICT**
JOHNSTOWN
COLORADO

DESCRIPTION
**INCLUSION AREA
BOUNDARY MAP**

DRAWN BY

L. Smith

SCALE

1" = 800'

EXHIBIT

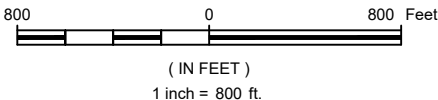
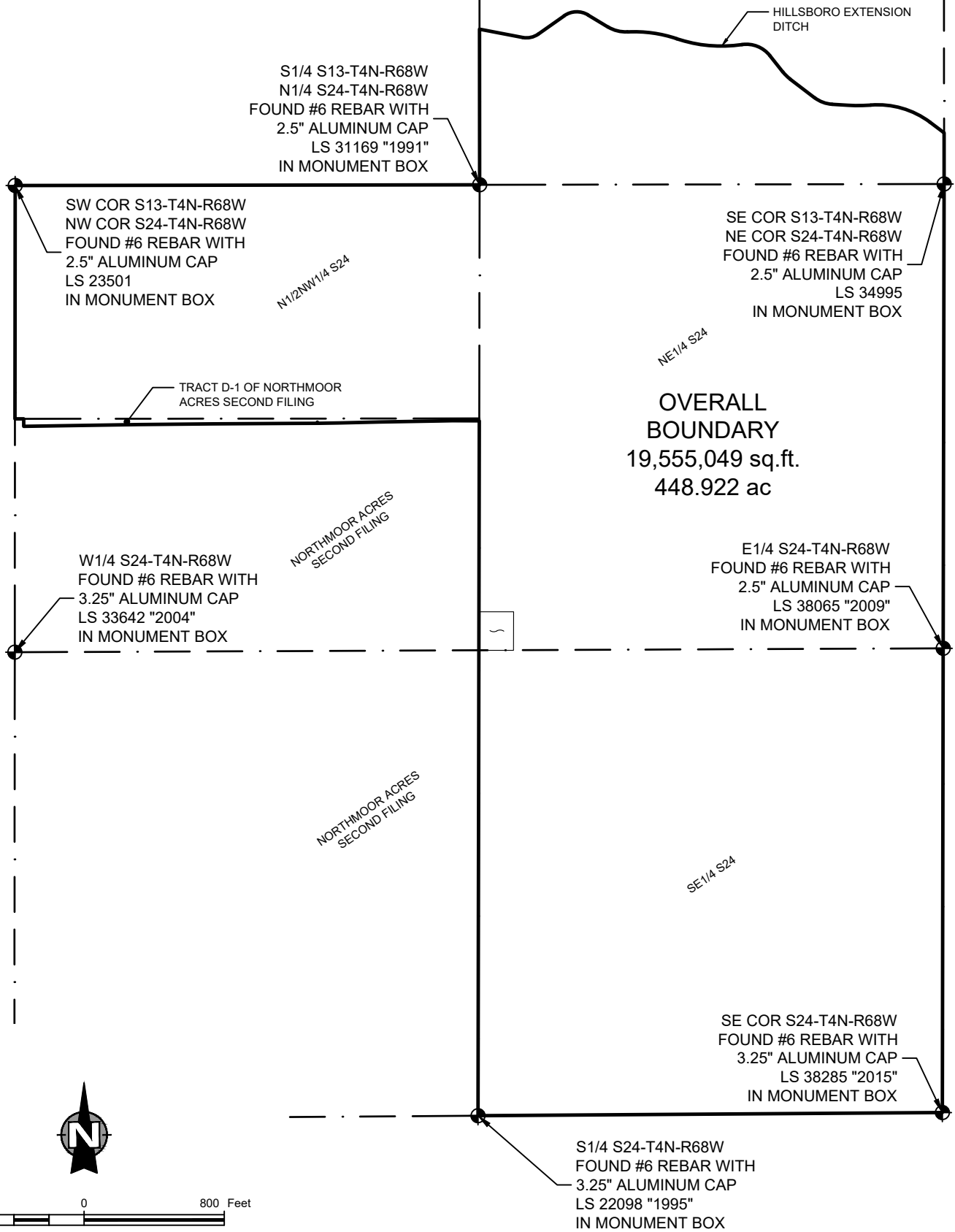
DATE

May, 2021

PROJECT

1659-001

C-2



**NORTHERN
ENGINEERING**

FORT COLLINS: 301 North Howes Street, Suite 100, 80521
GREELEY: 820 8th Street, 80631

970.221.4158
northernengineering.com

**PODTBURG
METROPOLITAN DISTRICT**
JOHNSTOWN
COLORADO

DESCRIPTION
**OVERALL
BOUNDARY MAP**

DRAWN BY
L. Smith
DATE
May, 2021

SCALE
1" = 800'
PROJECT
1659-001

EXHIBIT
C-3