

# PODTBURG METROPOLITAN DISTRICT NO. 3

2619 Canton Court, Suite A  
Fort Collins, CO 80525

December 21, 2022

Division of Local Government  
1313 Sherman Street, Room 521  
Denver, CO 80203

Weld County Assessor  
1400 N. 17<sup>th</sup> Avenue  
Greeley, CO 80631

Weld County Clerk & Recorder  
1402 N. 17<sup>th</sup> Avenue  
Greeley, CO 80631

RE: Podtburg Metropolitan District No. 3 (LGID 67552), Current Boundary Map

Dear Sir or Madam:

In accordance with Section 32-1-306, C.R.S., this letter is to advise you on the boundaries of the above-referenced District through the filing of the District's boundary map.

Please contact me if you have any questions.

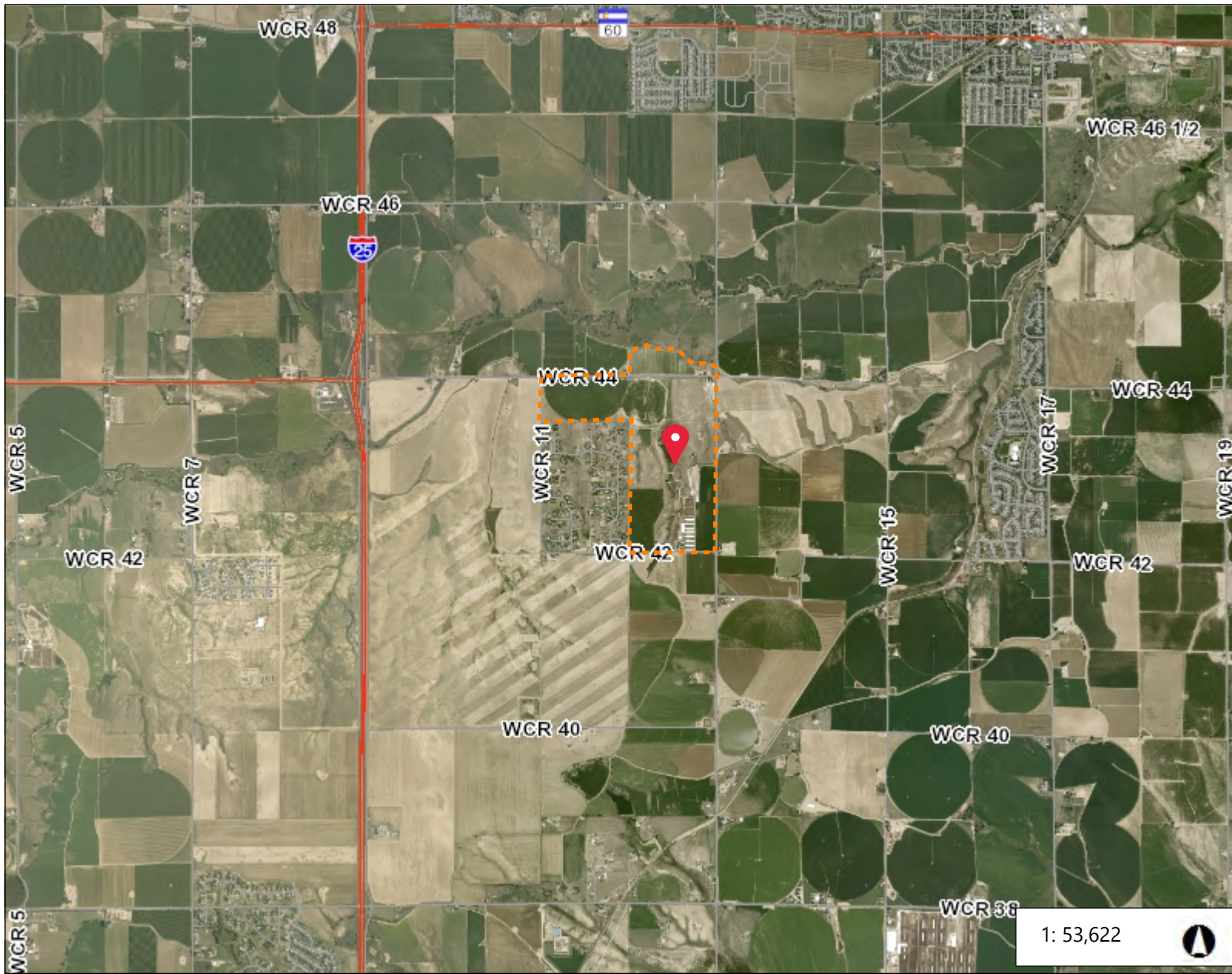
Sincerely,

/s/ Alex Carlson  
Manager

Via e-mail: Weld County Assessor, Brenda Dones, [assessor@weldgov.com](mailto:assessor@weldgov.com)

Weld County Clerk & Recorder, Carly Koppes, [weld-districts@weldgov.com](mailto:weld-districts@weldgov.com)

Via e-filing portal: Division of Local Government



### Legend

- Highway
- Road
- Road
- Highway

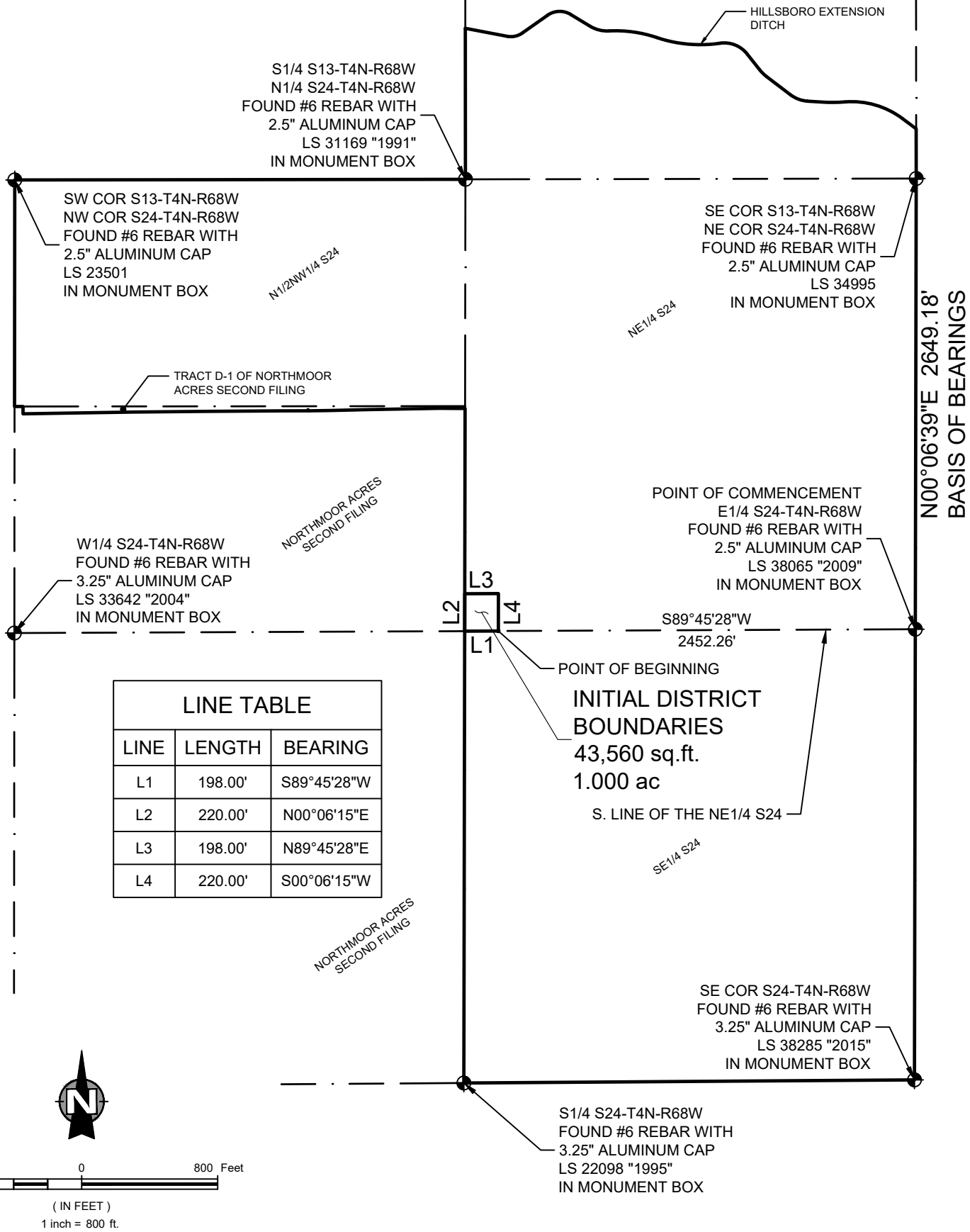
1: 53,622



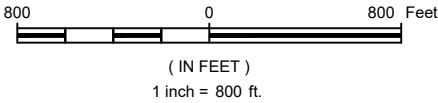
8,936.9      0      4,468.46      8,936.9      Feet

### Notes

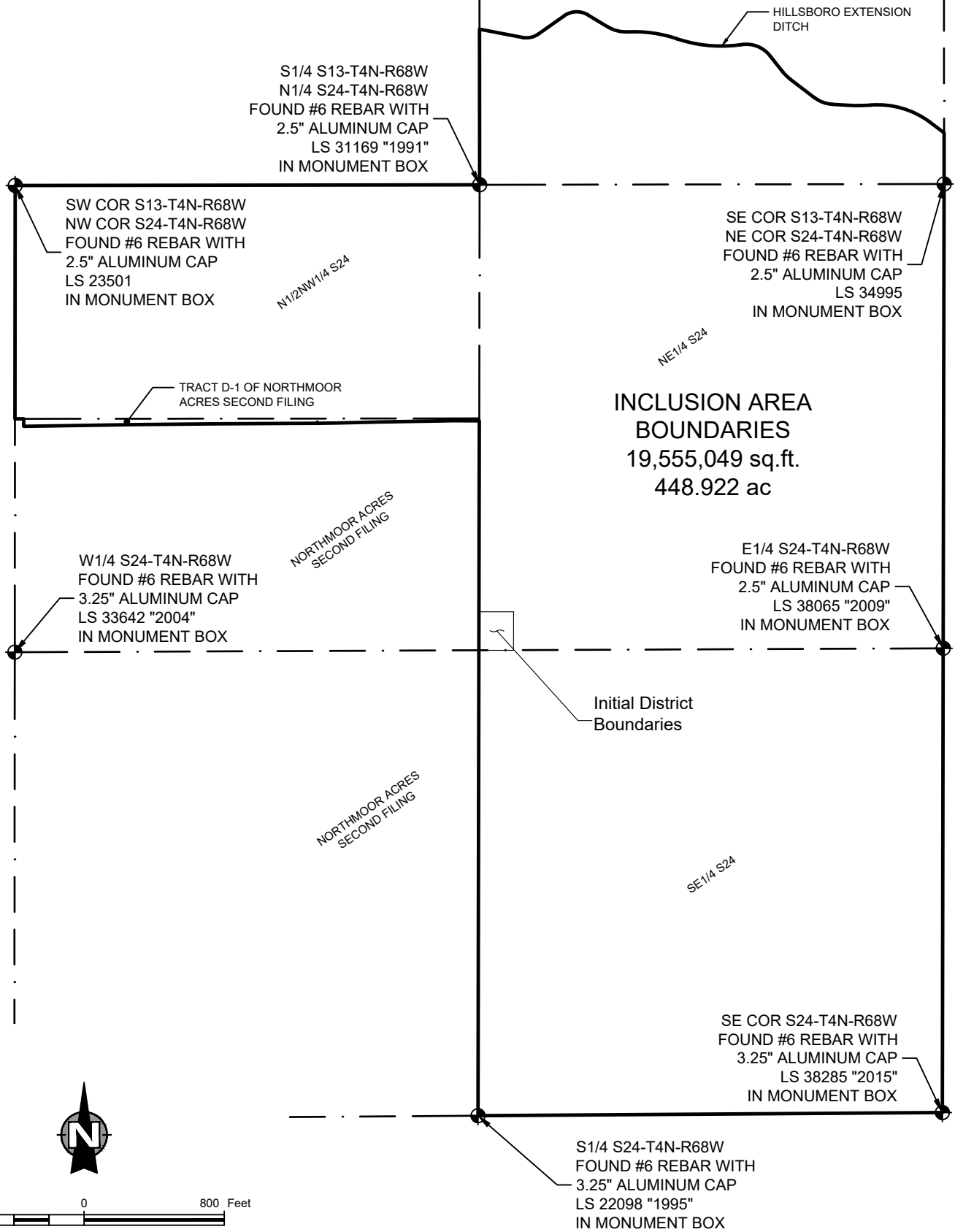
S:\Survey\_Jobs\1659-001\Drawg\Metro District\1659-001 Initial District Boundaries.dwg, 6/21/2021 12:59:01 PM, 1:1



LINE TABLE		
LINE	LENGTH	BEARING
L1	198.00'	S89°45'28\"W
L2	220.00'	N00°06'15\"E
L3	198.00'	N89°45'28\"E
L4	220.00'	S00°06'15\"W



<p><b>NORTHERN ENGINEERING</b></p> <p style="font-size: small;">FORT COLLINS: 301 North Howes Street, Suite 100, 80521 GREELEY: 820 8th Street, 80631</p> <p style="font-size: small; text-align: right;">970.221.4158 northernengineering.com</p>	<p><b>PODTBURG METROPOLITAN DISTRICT</b></p> <p>JOHNSTOWN COLORADO</p>	<p>DESCRIPTION</p> <p><b>INITIAL DISTRICT BOUNDARIES</b></p>	
		<p>DRAWN BY</p> <p>L. Smith</p> <p>DATE</p> <p>June, 2021</p>	<p>SCALE</p> <p>1" = 800'</p> <p>PROJECT</p> <p>1659-001</p>



800 0 800 Feet

( IN FEET )  
1 inch = 800 ft.



**NORTHERN  
ENGINEERING**

FORT COLLINS: 301 North Howes Street, Suite 100, 80521  
GREELEY: 820 8th Street, 80631

970.221.4158  
northernengineering.com

**PODTBURG  
METROPOLITAN DISTRICT**  
JOHNSTOWN  
COLORADO

DESCRIPTION  
**INCLUSION AREA  
BOUNDARY MAP**

DRAWN BY

L. Smith

SCALE

1" = 800'

EXHIBIT

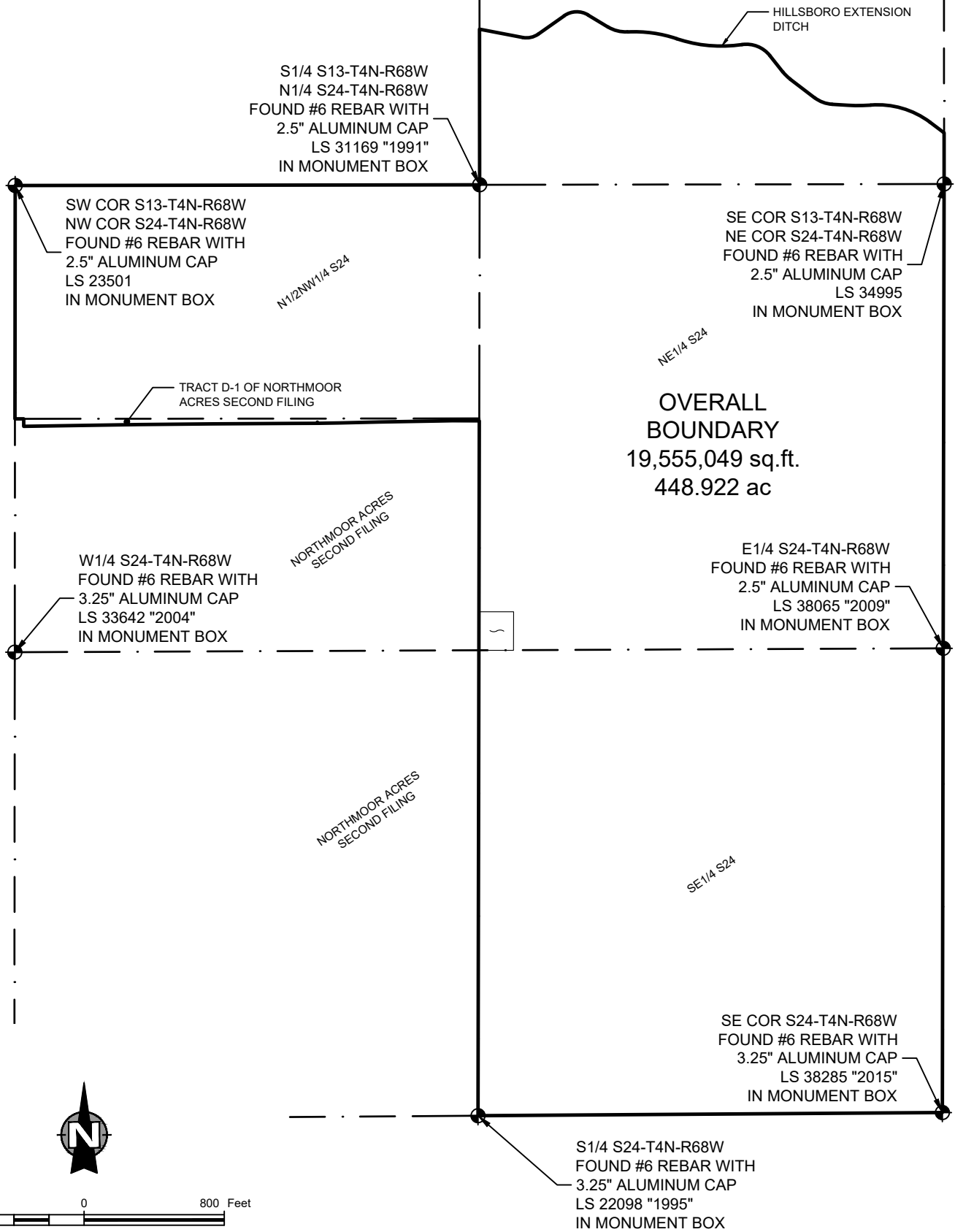
DATE

May, 2021

PROJECT

1659-001

**C-2**



800 0 800 Feet

( IN FEET )  
1 inch = 800 ft.



**NORTHERN**  
ENGINEERING

FORT COLLINS: 301 North Howes Street, Suite 100, 80521  
GREELEY: 820 8th Street, 80631

970.221.4158  
northernengineering.com

**PODTBURG**  
**METROPOLITAN DISTRICT**  
JOHNSTOWN  
COLORADO

DESCRIPTION  
**OVERALL**  
**BOUNDARY MAP**

DRAWN BY

L. Smith

SCALE

1" = 800'

EXHIBIT

DATE

May, 2021

PROJECT

1659-001

**C-3**